

## AVE-766 Series

**Brand:** AVE Science & Technology

**Product Code:** AC019AV

**Availability:** 2 - 3 Days

**Call for Price:** +2 01000 6546



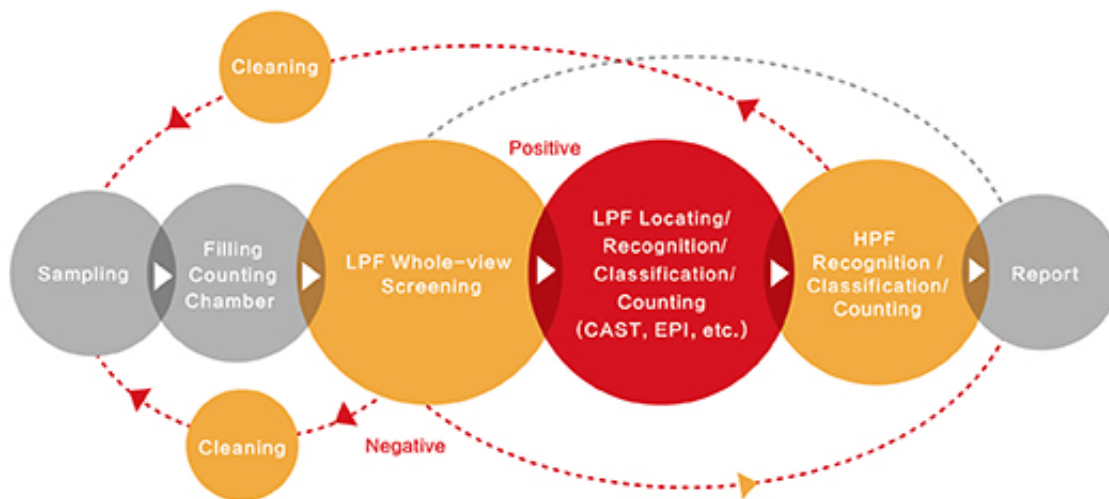
### Short Description

Pending FDA Clearance; Latest Launch, six channels work alternately, compatible with AVE-752 Automatic Urine Analyzers at perfect matching throughput and customized for large-sized laboratories.

### Description

Pending FDA Clearance; Latest Launch, six channels work alternately, compatible with AVE-752 Automatic Urine Analyzers at perfect matching throughput and customized for large-sized laboratories.

### *Instrument Work Flow*



### ***Parameters Detected***

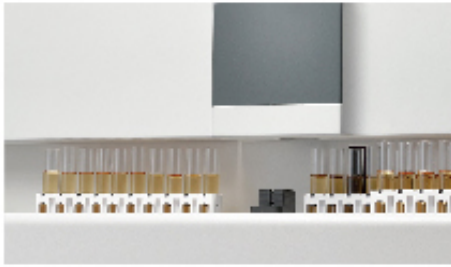


- All types of Urine Formed Elements are classified and counted, with automatic erythrocytes morphological analysis available and real images and statistical diagrams displayable and printable;
- It is connectable to Automatic Urine Analyzers and a comprehensive report is generated;
- Urine physical indexes are reportable;
- Extensible tests of Hydrothoax, Cerebrospinal Fluid etc. can be don as well.

### ***Work Principle***

Use automated morphological microscopy technology to capture real images of urine formed elements, and then locate and track, recognize, classify and count them.

### **Features**



- Made strictly according to ISLH Recommended Reference Procedure for the Enumeration of Particles in Urine;
- Double microscope works simultaneously to improve throughput sharply up to 200 tests / hour;
- Un-centrifuged urine samples at cutoff concentration level of 3-5cell/ $\mu$ l are detectable;
- Automatic sampling system with liquid level detection;
- Automatic recognition, classification and quantitation of urine formed elements;
- Precise erythrocytes morphological analysis helps to determine the source of hematuria;
- Real whole view-field microscopic images of urine formed elements are presented;
- Automatic notice of verification and on-screen verification, no additional microscopic review needed;
- Characteristic parameters of urine formed elements are available for further clinical research;
- Standardized and confirmatory analysis report with both images and diagrams available;
- Self-learning ability continuously improves the recognition accuracy;
- Unique morphological quality control available;
- Unidirectional or bidirectional interface with LIS/HIS;
- Software and language upgrades by USB stick;
- Combinable with automatic urine analyzers.

### **Technical Parameters**

- Auto-detected Urine Formed Elements: Normal red blood cells (NRBC), Abnormal red blood cells (ARBC), White blood cells (WBC), Casts (CAST), Epithelial cells( EPI), Yeast (YST), Crystals (CRYS), Mucus (MUC) and Bacteria (BAC). Further sub-classification is available with manual on-screen verification!
- Magnification: Standard 10X & 40X images
- Memory: Min. 200,000 results (including all images captured)
- Min. Sample volume: 2.0 ml
- Sample level detection: Yes

- Max. Sample loading number: 6 racks of 10 tubes
- Throughput: Up to 200 tests / hour
- Built-in Barcode reader: Yes
- Printer: Laser, external, optional
- Interfaces: USB, RS232, LAN
- Dimensions (main unit): 825 x 650 x 545mm (L x D x H)
- Weight (main unit): 79kg
- Power (main unit): 100-240V~50/60Hz, 450VA

## Product Gallery

